



ASTON MARTIN

Vantage

VANTAGE

The very essence of Aston Martin is something you feel each time you catch a glimpse of one of our sports cars. It sweeps over you on every unforgettable drive. Powerful, exhilarating and precise yet timelessly elegant and sophisticated, our cars blend iconic design, exceptional engineering and unrivalled craftsmanship to create an irresistible, emotional experience. The latest Vantage range embodies our core values of Power, Beauty and Soul and delivers an electrifying driving experience that is unmistakably Aston Martin.

POWER. BEAUTY. SOUL.





CONTENTS

6 THE STORY OF AN ICON
12 VANTAGE FAMILY
16 DESIGN
22 CRAFT
28 PERFORMANCE & TECHNOLOGY
38 V8 VANTAGE
44 V8 VANTAGE S
50 VANTAGE N430
58 V12 VANTAGE S
66 COLOUR & TRIM
76 OPTIONS & ACCESSORIES
84 Q BY ASTON MARTIN
86 ASTON MARTIN LIFE
88 SPECIFICATIONS V8 VANTAGE, V8 VANTAGE S
90 SPECIFICATIONS VANTAGE N430, V12 VANTAGE S
92 IMPORTANT NOTICE

VANTAGE —
A PURE THOROUGHbred



SPIRIT OF EXCITEMENT

Vantage is woven into the fabric of pop culture and motor racing heritage. Scene-stealing appearances in the James Bond movies create unrivalled magnetism and, beneath the star quality, lies technology proven and honed during iconic endurance races such as the 24 hours of Le Mans. Possessed of dazzling charisma and a core of inner steel, Vantage is an icon of style and substance.





THE STORY OF AN ICON

The Vantage name is synonymous with intensified performance and satisfying the most demanding drivers. 'Vantage' first appeared in 1950 as a performance upgrade for the DB2. Larger SU carburetors and a higher compression ratio liberated an extra 20bhp and the DB2 Vantage finished 1st, 2nd and 3rd in class at Le Mans. The die was cast and Vantage has signified enhanced dynamism and unrivalled visceral thrills ever since.



1 The Aston Martin DB 2/4 Mk I Vantage helped define the marque in the fifties

2 The original V8 Vantage was a muscular GT for a new era

3 The Aston Martin DB7 Vantage rekindled the spirit of David Brown

4 The Aston Martin V12 Vantage S; a true sporting thoroughbred





RACING IS OUR DNA

Competition is our lifeblood. Today, every Aston Martin is distilled from a race car and Vantage has proven itself on the most demanding circuits around the world.

At the 24 hours of Le Mans, Vantage has asserted its speed and endurance time and time again with several podium finishes. In 2015 Aston Martin Racing produced the fastest qualifying car in its class.



08



GT12

AN UNCENSORED ADRENALIN RUSH

Lightweight, extreme and developed using all of Aston Martin's learning from its international race programme, GT12 is the most ferocious, focused and potent Vantage in our history. Series production is limited to just 100 units, as befits

its intensely specialised evolution. Built around the legendary 6.0-litre V12 engine, and with a motorsport-derived chassis, aerodynamics and handling balance, it crosses the divide between racetrack and road. GT12 is the ultimate Vantage.



V8 VANTAGE
COUPE

V8 Vantage is the Aston Martin that shaped a generation, embodying the timeless beauty, driving dynamics and exquisite craftsmanship that define the marque.

V8 VANTAGE
ROADSTER

V8 Vantage Roadster is a vibrant, open air, Vantage experience, bringing the sound of the naturally aspirated V8 alive to thrill your senses and make every journey unique.

V12 VANTAGE S
COUPE AND ROADSTER

A potent package, V12 Vantage S packs Aston Martin's biggest engine into its most compact sports car. The aggressively styled V12 Vantage S is Aston Martin's most visceral driving experience with a sound like no other.

V8 VANTAGE S
ROADSTER

Dynamically enhanced from V8 Vantage, the V8 Vantage S Roadster is an open two-seater for the true enthusiast, blending sporting ability with a cossetting interior and meticulous attention to detail.

V8 VANTAGE S
COUPE

V8 Vantage S takes Aston Martin's core model to a new level of intensity. V8 Vantage S is a unique package of extreme driver involvement; razor sharp performance with focus, beauty and power.

VANTAGE N430
COUPE AND ROADSTER

Forged at the infamous Nürburgring 24 hour race, N430 is the dramatic expression of V8 Vantage and has been created to deliver exceptional performance with a club sport ethos.

VANTAGE FAMILY IN DETAIL

The Vantage family offers the most sporting driving experience of the Aston Martin range. From the pure sculpture of V8 Vantage with its powerful V8 engine, to the aggressively

styled V12 Vantage S and its impressive 6.0-litre V12, every model is infused with Aston Martin's commitment to Power, Beauty and Soul.

V8 VANTAGE COUPE



ENGINE
32-valve, 4735 cc, V8

MAXIMUM POWER
313 kW (420 bhp/426 PS)
@ 7300 rpm

MAXIMUM TORQUE
470 Nm (346 lb ft)
@ 5000 rpm

ACCELERATION
0-100 KM/H 4.9 seconds
0-60 MPH 4.7 seconds

MAXIMUM SPEED
290 km/h (180 mph)

ROADSTER



ENGINE
32-valve, 4735 cc, V8

MAXIMUM POWER
313 kW (420 bhp/426 PS)
@ 7300 rpm

MAXIMUM TORQUE
470 Nm (346 lb ft)
@ 5000 rpm

ACCELERATION
0-100 KM/H 4.9 seconds
0-60 MPH 4.7 seconds

MAXIMUM SPEED
290 km/h (180 mph)

V8 VANTAGE S COUPE



ENGINE
32-valve, 4735 cc, V8

MAXIMUM POWER
321 kW (430 bhp/436 PS)
@ 7300 rpm

MAXIMUM TORQUE
490 Nm (361 lb ft)
@ 5000 rpm

ACCELERATION
0-100 KM/H 4.8 seconds
0-60 MPH 4.6 seconds

MAXIMUM SPEED
305 km/h (190 mph)

ROADSTER



ENGINE
32-valve, 4735 cc, V8

MAXIMUM POWER
321 kW (430 bhp/436 PS)
@ 7300 rpm

MAXIMUM TORQUE
490 Nm (361 lb ft)
@ 5000 rpm

ACCELERATION
0-100 KM/H 4.8 seconds
0-60 MPH 4.6 seconds

MAXIMUM SPEED
305 km/h (190 mph)

VANTAGE N430 COUPE



ENGINE
32-valve, 4735 cc, V8

MAXIMUM POWER
321 kW (430 bhp/436 PS)
@ 7300 rpm

MAXIMUM TORQUE
490 Nm (361 lb ft)
@ 5000 rpm

ACCELERATION
0-100 KM/H 4.8 seconds
0-60 MPH 4.6 seconds

MAXIMUM SPEED
305 km/h (190 mph)

ROADSTER



ENGINE
32-valve, 4735 cc, V8

MAXIMUM POWER
321 kW (430 bhp/436 PS)
@ 7300 rpm

MAXIMUM TORQUE
490 Nm (361 lb ft)
@ 5000 rpm

ACCELERATION
0-100 KM/H 4.8 seconds
0-60 MPH 4.6 seconds

MAXIMUM SPEED
305 km/h (190 mph)

V12 VANTAGE S COUPE



ENGINE
48-valve, 5935 cc, V12

MAXIMUM POWER
421 kW (565 bhp/573 PS)
@ 6750 rpm

MAXIMUM TORQUE
620 Nm (457 lb ft)
@ 5750 rpm

ACCELERATION
0-100 KM/H 3.9 seconds
0-60 MPH 3.7 seconds

MAXIMUM SPEED
330 km/h (205 mph)

ROADSTER



ENGINE
48-valve, 5935 cc, V12

MAXIMUM POWER
421 kW (565 bhp/573 PS)
@ 6750 rpm

MAXIMUM TORQUE
620 Nm (457 lb ft)
@ 5750 rpm

ACCELERATION
0-100 KM/H 4.1 seconds
0-60 MPH 3.9 seconds

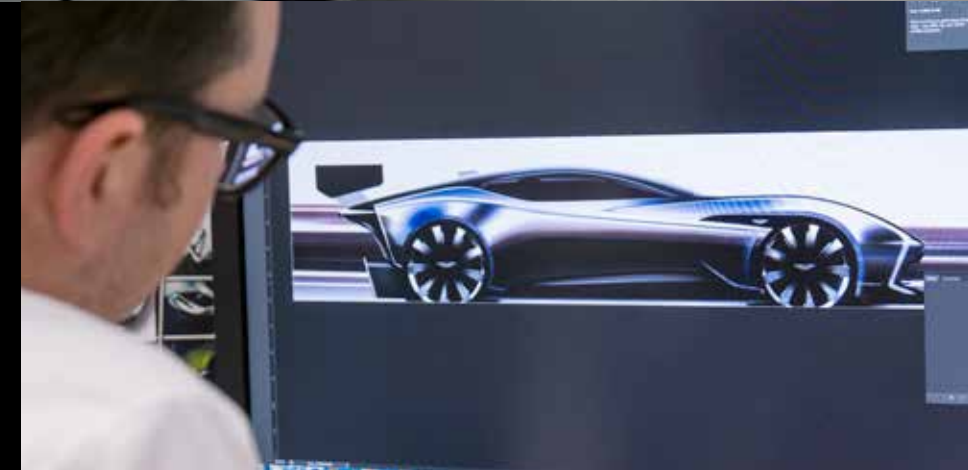
MAXIMUM SPEED
323 km/h (201 mph)



DESIGN

DESIGN

Aston Martin's world-leading design studio creates automotive art that is transformed into sculptures of aluminium and carbon fibre using time-honoured methods melded with pioneering technology.





SKILLED ARTISTRY

The design team has the task of advancing the art of Aston Martin whilst honouring its traditions. Through cutting-edge technology and materials each new model pushes the boundaries, but what sets Aston Martin apart is the skilled eye and implicit understanding of a unique heritage.

By embracing new technology and expressing it through perfect proportion and meticulous attention to detail, the evolution of Aston Martin will continue to set unprecedented standards.





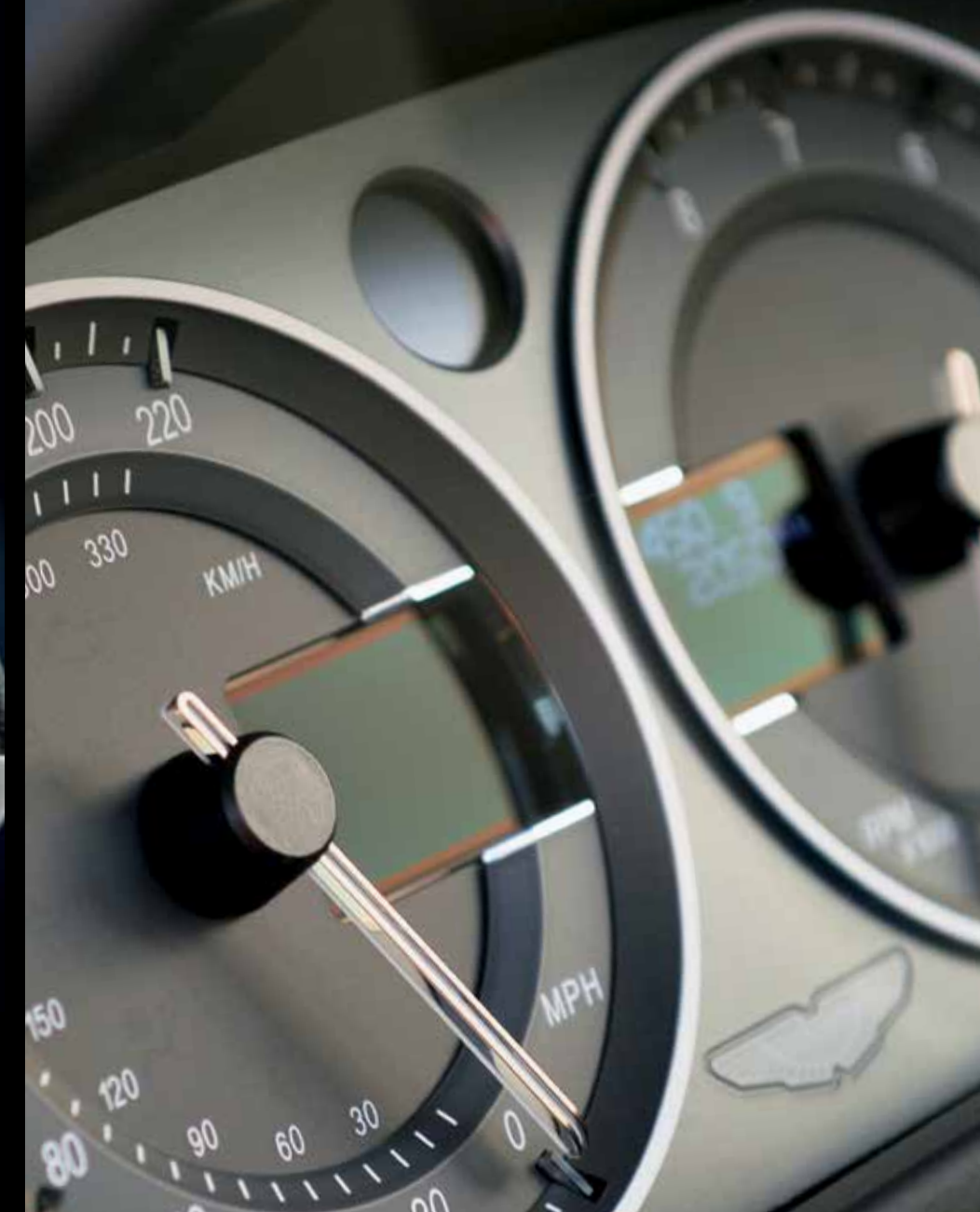
CRAFT

CREATED BY EXPERTS

Aston Martin's modern Gaydon headquarters is built around an obsession with attention to detail. A highly skilled workforce creates each Vantage with knowledge acquired and honed over generations. Each pair of hands that touch the car on its journey to completion is energised by a common determination to create the most beautiful cars in the world.

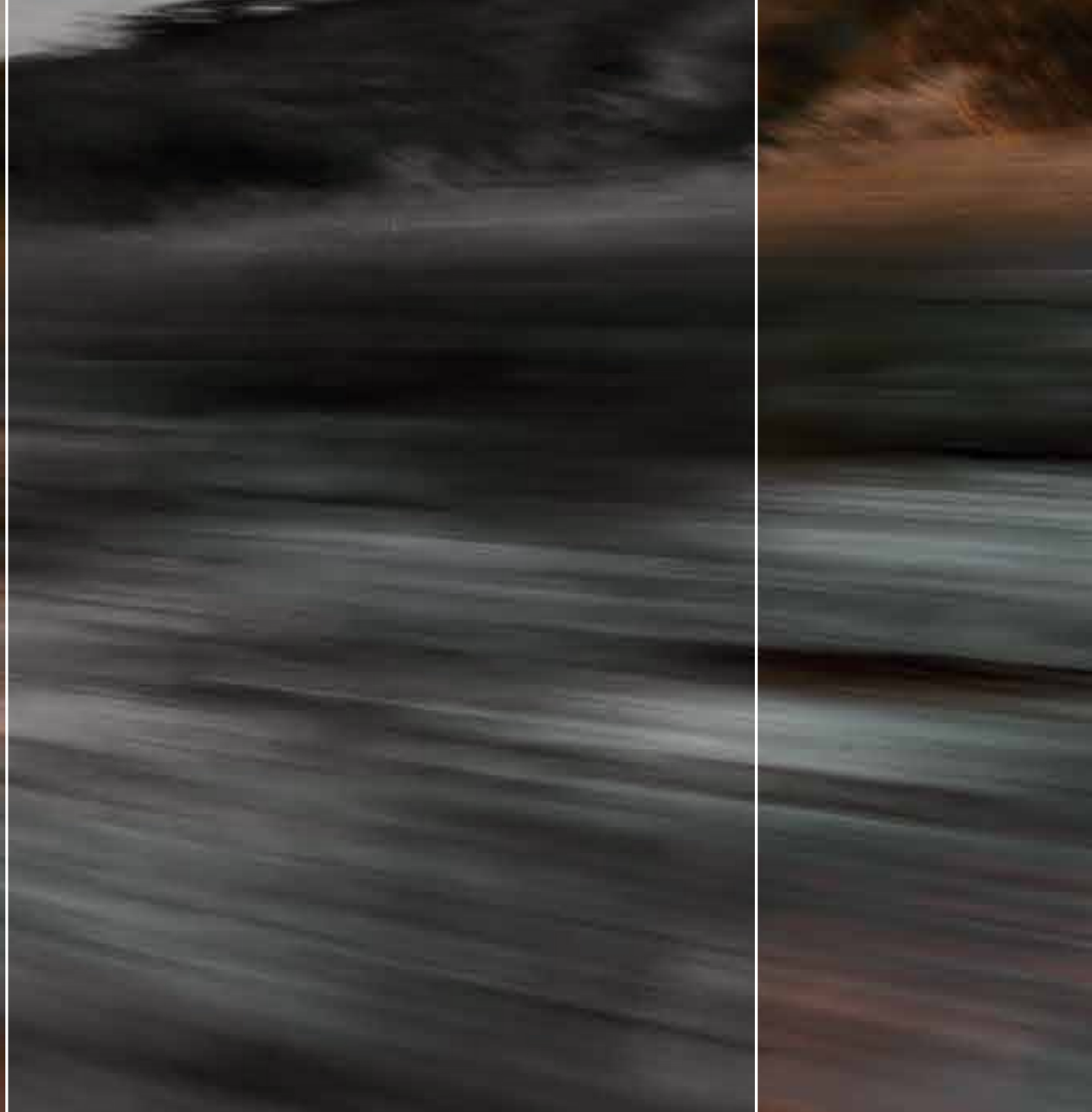
With a vast range of combinations of materials, colours and finishes available, every Vantage is special and each is the product of our craftspeople's absolute dedication to perfection. Every Vantage is painted with meticulous care, with up to seven layers creating a deep, flawless lustre. The process is painstaking but those 50 hours of intensely applied skill will ensure years of enjoyment for owners and admirers alike.





PASSION IN EVERY DETAIL

Inside, each interior is made up of 80 panels of leather and Alcantara® joined with flawless accuracy by intricate stitching worked by skilled hands – the birth of an Aston Martin is a remarkable journey.



PERFORMANCE &
TECHNOLOGY

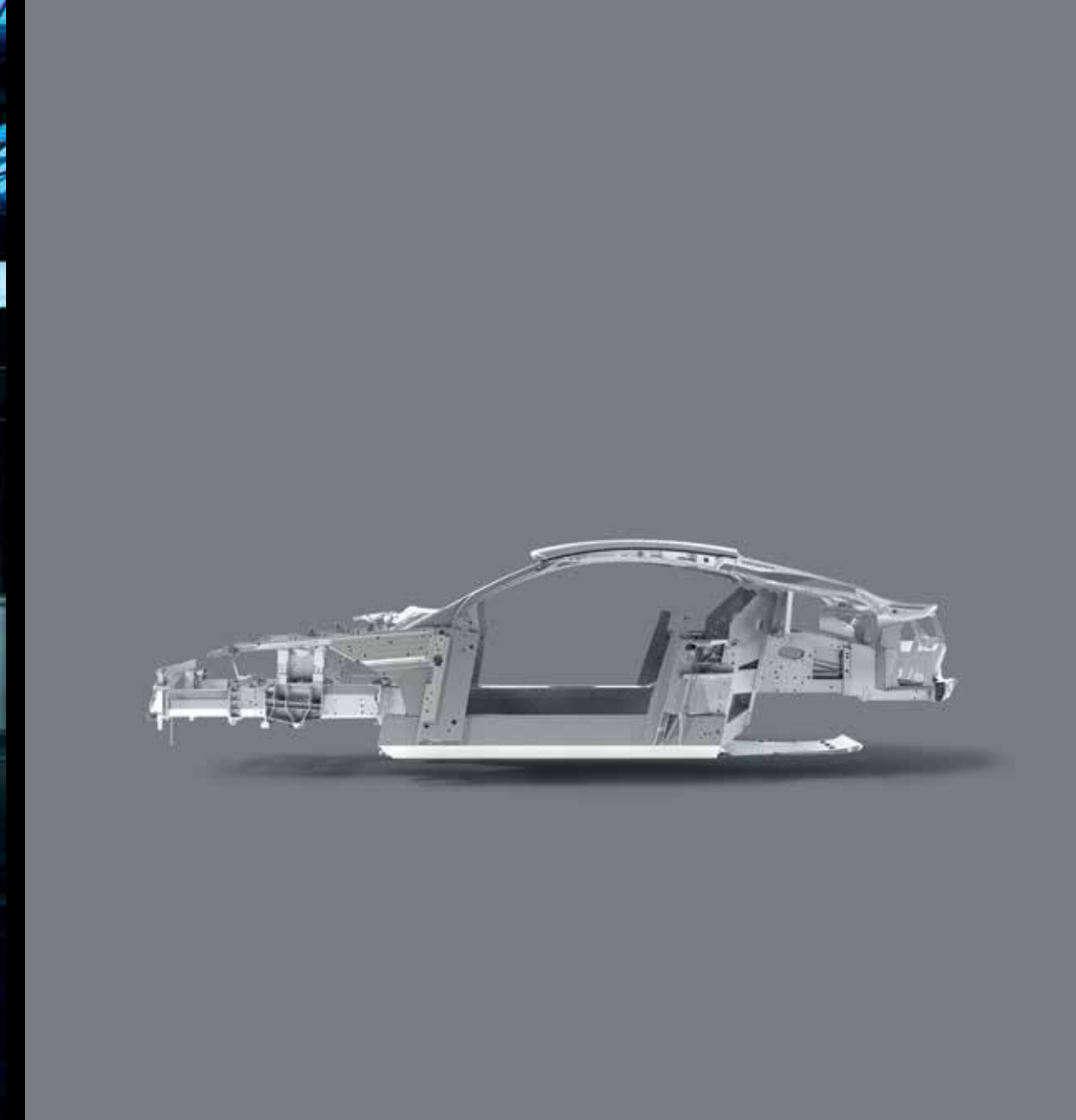


EXTREME EXCITEMENT

Performance should not be measured in raw power alone. It is about purity of response and absolute precision, placing the driver at the very centre of the driving experience. The Vantage range embodies that sense of control and a depth of performance that builds in intensity and energy the more is asked of their sonorous engines.

The 4.7-litre V8 crackles with aggression when exercised and the 6.0-litre V12 soars to a complex howl. Yet whilst both deliver the definitive sports car experience on the track they also feel and sound special on any journey. The combination of instant linear response, an unmistakable and sophisticated voice and smoothly delivered power with an edge of savagery is unique and unrivalled.



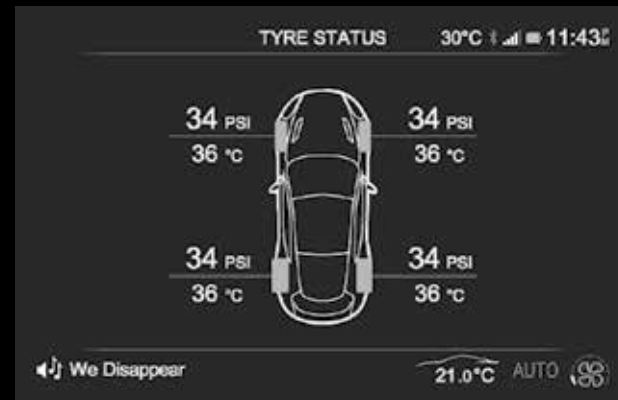
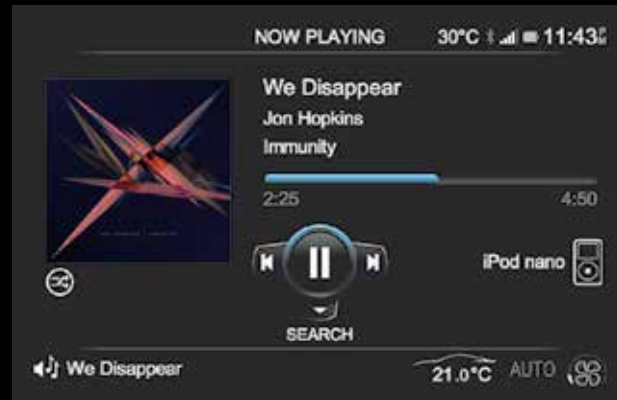


MASTERS OF ENGINEERING

Beneath the skin of every Vantage is the very foundation of the art of Aston Martin: a lightweight, highly versatile and immensely strong aluminium chassis structure that is bonded with aerospace adhesives. This structure forms part of the Vertical-Horizontal or 'VH' philosophy. Unique to Aston Martin, it offers a highly evolved platform from which to create perfectly balanced, stable and intuitive cars.

Both V8 and V12-engined Vantage models have their engines set as far back in the chassis as possible for maximum steering response and handling agility. The aluminium structure itself follows principles, and employs technologies, prevalent in the aerospace industry for an impressive balance of strength and lightness.

To achieve optimal weight distribution the gearbox is mounted at the rear in the form of a transaxle. Not only does this 52:48 balance ensure the Vantage has immaculate on-limit behaviour, it also maximises traction for greater stability and user-friendly performance.



INFOTAINMENT AND TECHNOLOGY

Vantage's new infotainment system, AMi II brings ergonomic and interface refinements to create a fully intuitive experience. High quality switchgear and contemporary materials combined with instantly responsive displays are integrated with the car's dynamic performance. Key infotainment features now

include Bluetooth® as standard, text message integration and a wide range of connectivity options. Convenience is married to peerless style with an elegant new centre stack available in a wide variety of tactile finishes, touch sensitive switchgear featuring haptic feedback technology and a user interface that is completely intuitive.

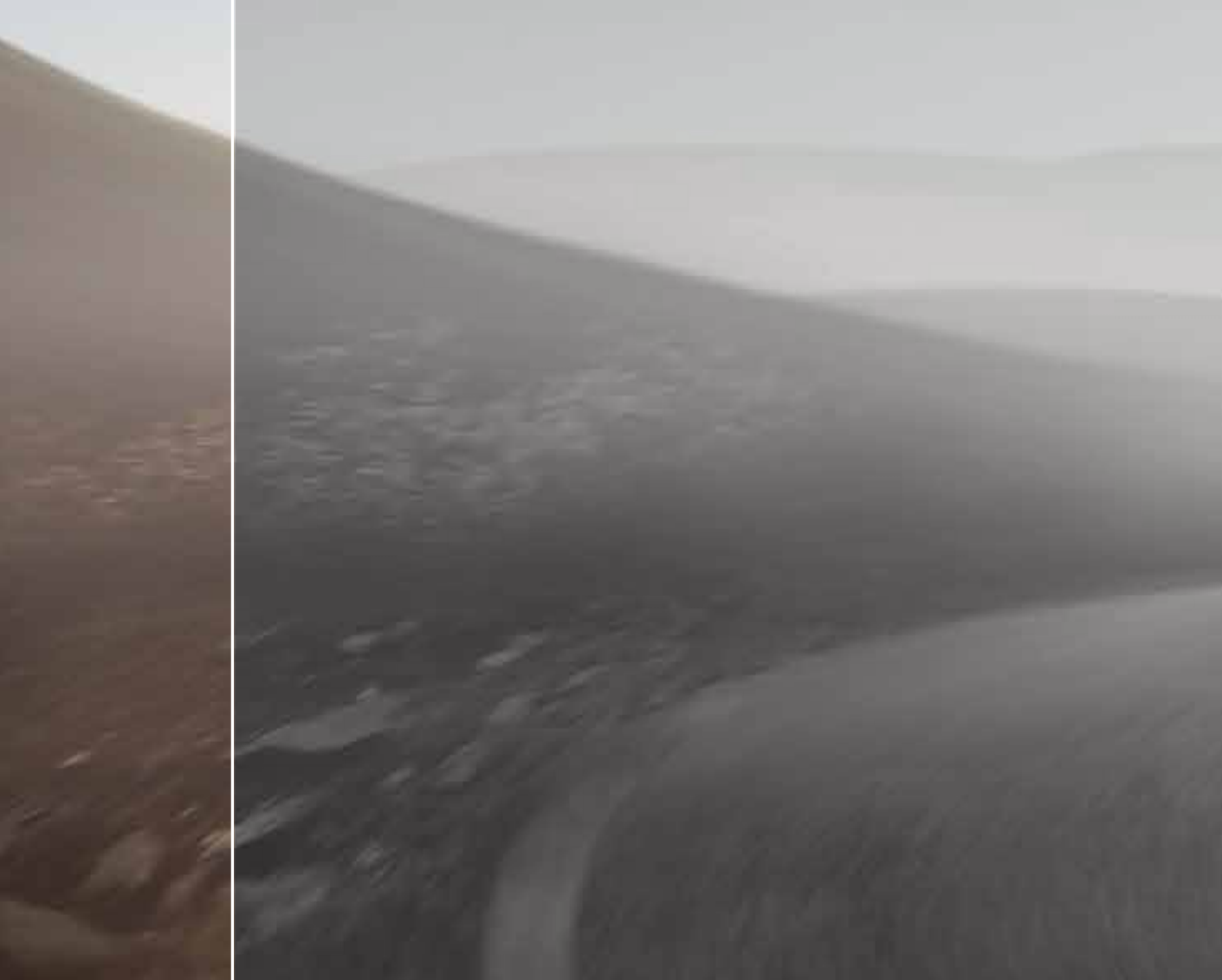




A SPINE TINGLING SOUNDTRACK

Every Aston Martin has its own distinctive voice, conjured up with a push of the crystal glass key. Cylinders, valves and exhaust work together in an instant to create a magisterial symphony that hints at the performance to come. The 4.7-litre V8 and 6.0-litre V12 have

their own distinct characters but they are united by a purity of tone and thrilling sense of occasion. Whichever Vantage you choose, it will set your senses alight as it bursts into life and signals the beginning of a lasting relationship.



V8 VANTAGE

ESSENCE OF A SPORTS CAR





V8 VANTAGE

TIMELESS APPEAL.
THE ORIGINAL ICON.

V8 Vantage is the cornerstone of the Vantage family. Its perfect proportions are timelessly beautiful yet the surfaces have a sculptural muscularity that conveys the dynamism of the driving experience. The purity of design speaks of its innate poise and the simple thrill of driving this finely honed drivers' car.

For ultimate involvement there is the option of a six-speed manual gearbox, or if you want to feel closer to the racer within, a seven-speed Sportshift II paddle shift transmission offers incredibly fast gear changes and allows you to focus completely on the road ahead and revel in the fierce V8 howl.

Crafted with the finest materials and engineered to deliver on any road or racetrack, V8 Vantage in Coupe or Roadster is the enduring sports car icon.

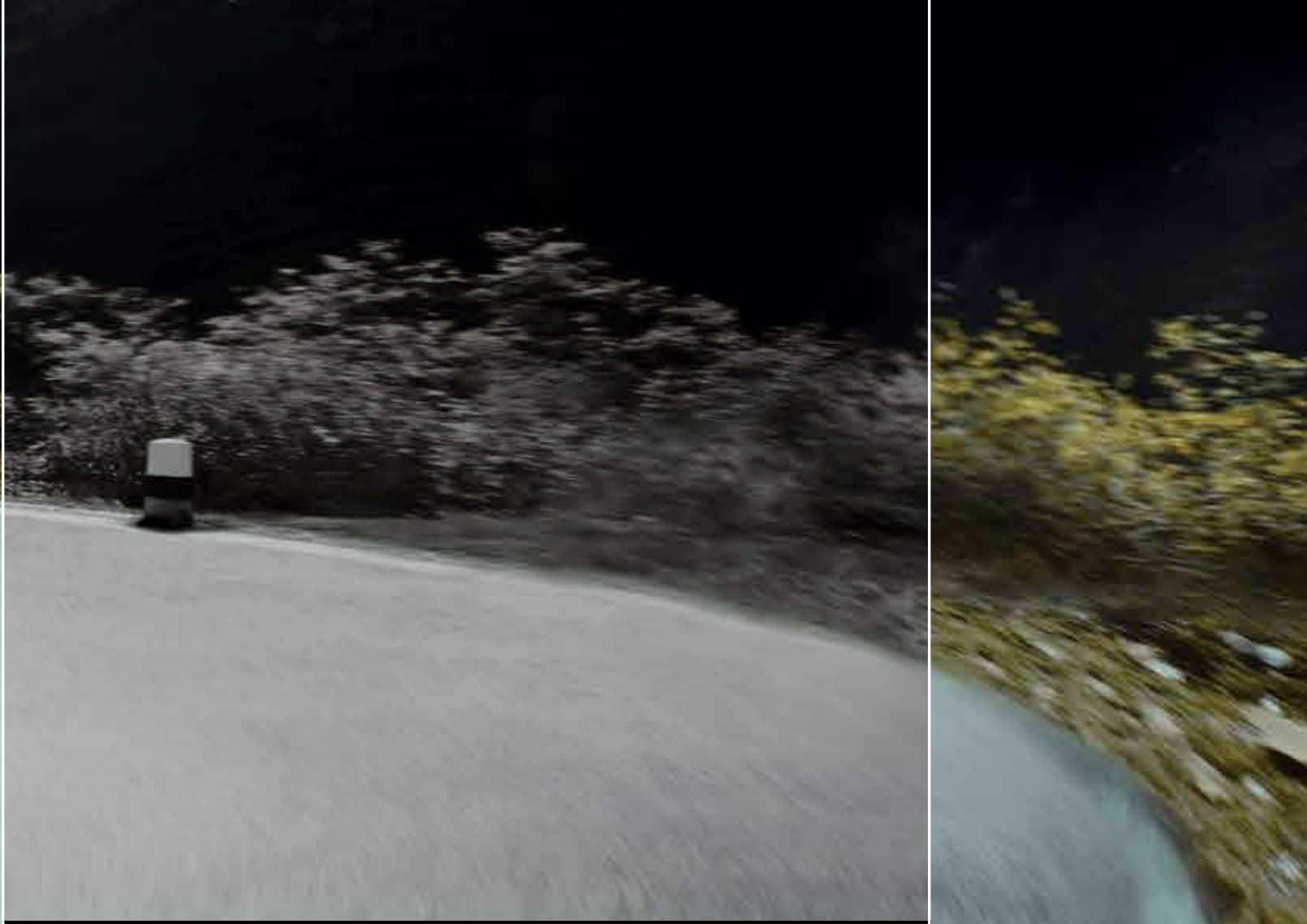


Vantage's exquisite interior melds the latest technology with high quality, tactile materials hand-finished with unerring accuracy. The new, sophisticated waterfall fascia cuts a bold architectural form but feels entirely natural to interact with and blends

harmoniously with the supple leathers and chronograph-inspired instruments. With almost endless colours and materials from which to choose, each V8 Vantage is unique and an experience to savour.

V8 VANTAGE





V8
VANTAGE S

RACE-BRED DYNAMISM





V8 VANTAGE S

V8 Vantage S builds on the inherent qualities of Aston Martin's two-seater sports car with enhanced performance, even sharper dynamics and a new visual aggression. It is a lesson in race-bred dynamism.

The beating heart of the car, its 4.7-litre V8 engine, is revised to produce an additional 10 bhp and a further 20 Nm increase in torque. In combination with a track-inspired but road-optimised sports suspension set-up, the V8 Vantage S offers startling responsiveness and assured stability.

The exhilarating driving experience is reflected in unique styling with carbon fibre detailing. Sculptural side sills optically widen the car and produce an aggressive rear profile. The lower front splitter and rear diffuser in exposed carbon fibre add to the visual tension.



V8 VANTAGE S

POWER CONTROL COMFORT

The cockpit retains the beautifully executed style of V8 Vantage but finely tailored sports seats and tactile trim add to the overriding sense of purpose. The result of these subtle but distinctive revisions is a unique package of intense driver involvement.



VANTAGE N430

CLUB SPORT. FREE SPIRIT.



VANTAGE N430



N430 SPECIAL EDITION. BRED ON THE TRACK, BUILT FOR THE ROAD

Vantage N430 is a special edition built to celebrate Vantage's success at the Nürburgring 24 hour race and 'VLN' endurance series. This fearsome circuit has become the proving ground for Vantage and once again, in 2015, an N430 in race trim won its class at the gruelling 24 hour event.

Five unique liveries combined with bold Club Sport Graphics Packs evoke the spirit of the racetrack and create a distinctive, purposeful character with a twist of motorsport drama. Twin five-spoke alloy wheels in graphite continue the theme and dark finishes to the

front grille, window surrounds, tailpipes and headlamp bezels add to the sense of menace. Engagingly raw and infused with athleticism, N430 is the product of an exhaustive motorsport programme and has the DNA of a race winner.





VANTAGE N430

With design and details inspired by endurance racing, Vantage N430 celebrates the racing passion at the heart of Aston Martin. N430 spikes the pulse and raises a smile before it even turns a wheel thanks to a driving environment that mixes dynamic design, race-bred materials and an infectious character.

Lightweight and tactile carbon fibre, Alcantara® and magnesium are skilfully blended with soft leather and Piano Black trim to create a focused sporting ambience. Contrast stitching and bespoke N430 embroidered logos on the exceptionally light and strong carbon fibre seats add a twist of playfulness.



V12 VANTAGE S

PURE PERFORMANCE





V12 VANTAGE S

SCORCHING PERFORMANCE. A FORCE OF NATURE

By combining the compact agility of the Vantage chassis with the scintillating response of our legendary 6.0-litre V12 engine, a sports car of outrageous ability has emerged. The V12 Vantage S is shot-through with aggression yet blessed with delectable poise and balance. It is a completely immersive experience.

Performance is startling – 205 mph potential and 0-60 mph in 3.7 seconds – but it is the control placed in the hands of the driver that makes the V12 Vantage S a rewarding drivers' car. The seven-speed Sportshift III paddle-shift transmission gives instant access to that astonishing 573PS engine, three-stage

adjustable dampers help prime the car for any road or mood and carbon-ceramic brakes ensure that the V12 Vantage S offers absolute consistency and assurance even at its limits. Available as a Coupe or Roadster this extraordinary car is uniquely visceral and endlessly addictive.





V12 VANTAGE S

In the transformation from V8 to V12 power, the engineers and designers at Aston Martin forensically examined and enhanced every area of the car, from suspension and brakes to aerodynamics, cooling and lightweight carbon fibre components. The result remains unmistakably Vantage but pulled and slashed into an exaggerated form with intense visual impact.

The bold carbon fibre grille and dramatically louvred bonnet create an aggressive face, but are also functional – channelling more air into the engine bay to cool the V12. Lightweight forged alloy wheels and carbon ceramic brakes reduce unsprung mass to enhance agility whilst simultaneously improving the car's on-track capability.

Inside, the V12 Vantage S possesses effortless elegance and utilises lightweight materials wherever possible to capture the essence of the racetrack. The Alcantara®-trimmed steering wheel and carbon fibre gearshift paddles (optional) are a tactile reminder of this car's focus and there are a whole range of bespoke panel stitch and stripe designs to further intensify this car's drama.



COLOUR
& TRIM

EXTERIOR COLOUR PALETTE

The unique silhouette of Vantage is a blank canvas for you to define your ultimate Aston Martin. Our paint options are divided into three categories – the powerful Primary collection, the bold and modern Contemporary hues and complex, multi-layered Special colours.



Jet Black



Midnight Blue



Silver Fox



Onyx Black



Tungsten Silver



Volcano Red



Stratus White



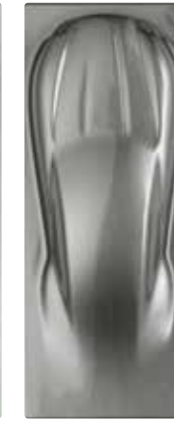
Silver Blonde



Selene Bronze



Hardly Green



Hammerhead Silver



Cobalt Blue



Arizona Bronze



Sea Storm



Sunburst Yellow



Skyfall Silver



Diavolo Red



Kopi Bronze



Meteorite Silver



China Grey



Mariana Blue



Appletree Green



Marron Black



Madagascar Orange



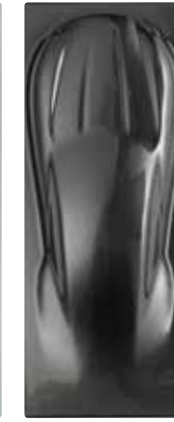
Mako Blue



Concours Blue



Lightning Silver



Quantum Silver



Ocellus Teal



Divine Red



Cinnabar Orange



Morning Frost White



Yellow Tang



Ultramarine Black

PAINT PALETTE PRIMARY

Confident, understated and elegant, the Primary palette ranges from solids through to metallics.

PAINT PALETTE CONTEMPORARY

Paint technology and trends merge to create eye-catching and subtle visual effects. Stylish, sleek and bold metallics, pearl effects and xyrallics blend to create a stunning palette.

PAINT PALETTE SPECIAL

An intimate palette of specialist technologies including true pearls, tri-coats, chromaflair pigments, xyrallics and tinted clear-coats. The impact of their individual technology pushes the boundaries of paint to create truly striking exteriors.

INTERIOR COLOUR PALETTE

Aston Martin's craftsmanship skills with leather are renowned. Each Vantage is trimmed to exacting standards, using the finest Bridge of Weir leather and employing methods evolved through decades of experience.

New colours - Vivid Red, Royal Mint, Bronze Metallic and Black Damson – bring rich vibrancy to the Vantage interior, with contrast stitching and a multitude of colour combinations to create your own personal vision.

Bridge of Weir has been at the forefront of innovation and quality since 1905. Whenever there have been advances in motoring, classic furniture and luxury travel, their leather has played its part, featuring in icons as diverse as the Ford Model T and Concorde.

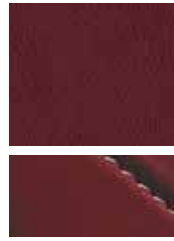
Only the finest hides sourced from the best heritage breeds are used. The same pure water used in the distillation of the most renowned malt whiskies and craftsmanship developed over generations, creates a unique alchemy that results in the very finest Scottish leather.



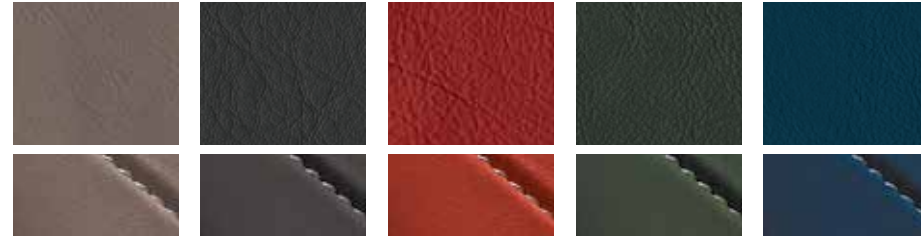
Obsidian Black



Sandstorm



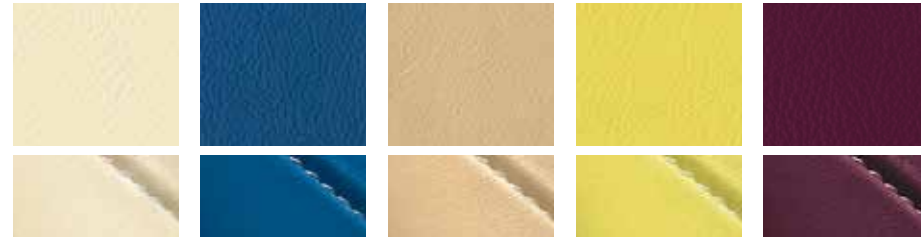
Lords Red



Dark Mocha Phantom Grey Spicy Red Parliament Green Aurora Blue



Kestrel Tan Vivid Red Deep Purple Pure Black Ice Mocha



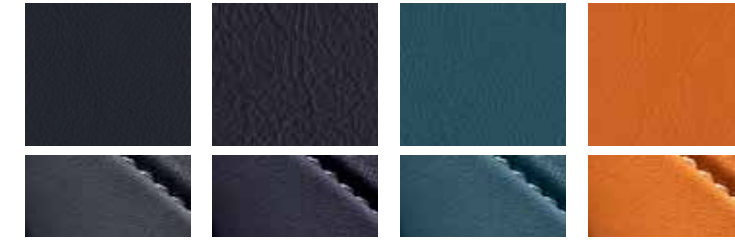
Cream Truffle Spectral Blue Winter Wheat Electron Yellow Fandango Pink



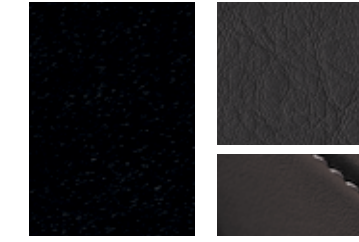
Bitter Chocolate Madagascar Orange Sahara Tan Chancellor Red



Ivory Royal Mint Chestnut Tan Argento Grey



Dark Knight Black Damson True Teal Californian Poppy



Obsidian Black (Balmoral) Bronze Metallic (Caithness)



Sahara Tan (Balmoral)



Chancellor Red (Balmoral)

LEATHER PRIMARY

Available in Strathmore leather

These classic hues are intrinsically linked with Aston Martin's rich heritage. The embossed Strathmore leather comes as standard and gives absolute consistency. Primary colours are also available in Caithness leather for those who wish to upgrade.

LEATHER CONTEMPORARY

Available in Caithness leather

Cool and understated, bold and exciting, deep and indulgent, the Contemporary colour palette offers vast scope to satisfy any taste. A dry-drumming process gives the Caithness leather a natural and highly tactile soft finish.

Upgrade to Caithness for a luxurious ambience, whichever colour you choose.

LEATHER SPECIAL

Available in Balmoral leather

Hand selected from the top 10-percent of raw hides then milled and framed by hand for an incredibly soft, smooth feel, the Balmoral finish is unparalleled. For ultimate luxury we offer semi-aniline leathers of the highest quality.

The new Bronze Metallic leather features a special metallic effect applied to the leather's top coat, resulting in a unique offering unlike any other leather in the Aston Martin range.



Iridium

Graphite

Piano Ice Mocha



Carbon Fibre Twill

Satin Cuprum
Carbon Fibre

Piano Black

FASCIA COLOUR & TRIM

An Aston Martin interior is a harmonious blend of design, detail, technology and material, with extensive options to create an entirely unique character of your own.

The new style centre console can be finished in a variety of materials shown above, off-setting the glass switchgear and new graphics on the infotainment screen.



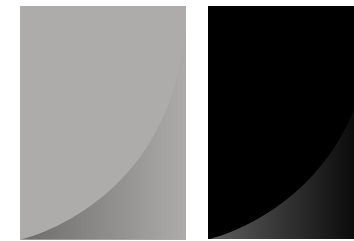
Above image is for illustrative purposes only. Finishes vary across models.

- 1 Lower centre console
- 4 Steering wheel airbag ring
- 2 Air vent surrounds
- 5 Paddle shift
- 3 Door pulls

TRIM PACK OPTIONS

Our range of new fascias is complemented by interior trim packs in Graphite, Iridium, Piano Black, Piano Ice Mocha or Carbon Fibre.

Each trim pack offers a combination of finishes for each model, covering the areas illustrated above.



Iridium

Piano Black

Piano Ice
Mocha

Graphite

Carbon Fibre
Twill

V8 VANTAGE

TRIM PACK	Graphite	Iridium	Piano Black	Piano Ice Mocha	Carbon Fibre
FASCIA					
● GRAPHITE	●				
○ IRIDIUM	●	○			
○ PIANO BLACK	●	○	○		○
○ PIANO ICE MOCHA	●	○		○	
○ CARBON FIBRE TWILL	●	○	○		○
○ SATIN CUPRUM CARBON FIBRE	●	○	○		

V8 VANTAGE S

TRIM PACK	Iridium	Piano Black	Piano Ice Mocha	Carbon Fibre
FASCIA				
● IRIDIUM	●			
○ PIANO BLACK	●	○		○
○ PIANO ICE MOCHA	●		○	
○ CARBON FIBRE TWILL	●	○		○
○ SATIN CUPRUM CARBON FIBRE	●	○		

STANDARD ● OPTION ○

VANTAGE N430

TRIM PACK	Piano Black	Carbon Fibre door pulls
FASCIA		
● CARBON FIBRE TWILL	●	○

V12 VANTAGE S

TRIM PACK	Piano Black	Carbon Fibre door pulls
FASCIA		
● PIANO BLACK	●	○
○ CARBON FIBRE TWILL	●	○
○ SATIN CUPRUM CARBON FIBRE	●	

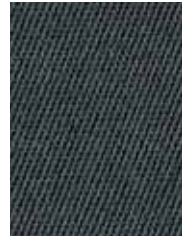
FASCIA & TRIM PACK COMBINATIONS

INTERIOR FINISHING TOUCHES

Your Aston Martin can be finished in any colour you wish, perhaps even a unique colour created to your own specification. To explore the full range of exterior and interior colours, materials and finishes offered visit the official Aston Martin online configurator at www.astonmartin.com/configure



Black



Titan Grey



Grenadine Red



Cirrus Grey



Arctic Blue



Ice Mocha



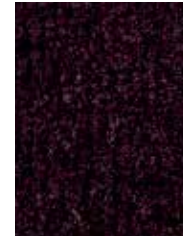
Obsidian Black



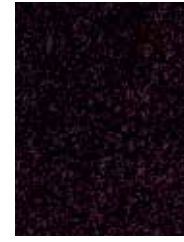
Ivory



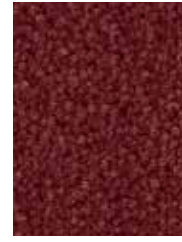
Obsidian Black



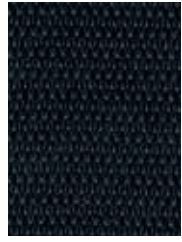
Black Cherry



Bitter Chocolate



Chancellor Red



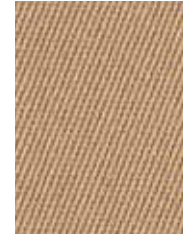
Warm Charcoal



Flint



Burgundy



Sandstorm



Ivory



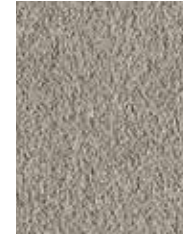
Light Tan



Moon Shadow



Chancellor Red



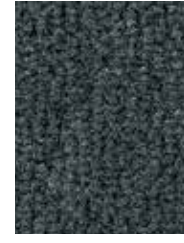
Tailor's Grey



Moon Shadow



Obsidian Black



Blue Haze



Ice Mocha



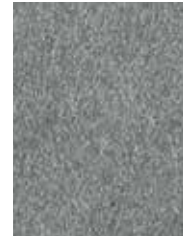
Bitter Chocolate



Westminster Green



Tailor's Grey



Grey Blend



Blue Haze



Chancellor Red



Sandstorm



Sahara Tan



Parliament Green



Atlantic Blue



Bitter Chocolate



Pure Black



Light Tan



Caspian Blue



Phantom Grey

HOOD
PRIMARY

CONTEMPORARY

ALCANTARA®

PRIMARY CONTEMPORARY

Alcantara® is a suede-like material that embodies a perfect balance of technology and tradition. An Italian product of excellence, it is durable and stain-resistant with a highly tactile and luxurious feel.

ROKONA

PRIMARY CONTEMPORARY

Rokona fabric is used in the headlining of Roadsters across the Vantage range because it has increased stretch and flexibility, as well as anti-odour and anti-soil properties.

CARPET

PRIMARY CONTEMPORARY

SEAT BELTS

PRIMARY CONTEMPORARY



OPTIONS &
ACCESSORIES



WHEEL OPTIONS



19" 5-SPOKE ALLOY SILVER PAINTED WHEELS
Standard V8, V8 S



19" 5-SPOKE ALLOY GRAPHITE PAINTED WHEELS
Standard N430



19" 5-SPOKE ALLOY GLOSS BLACK PAINTED WHEELS WITH DIAMOND-TURNED FINISH
Option V8, V8 S, N430



19" 10-SPOKE FORGED ALLOY SILVER PAINTED WHEELS WITH DIAMOND-TURNED FINISH
Option V8, V8 S



19" 10-SPOKE FORGED ALLOY GRAPHITE PAINTED WHEELS
Option N430



19" 10-SPOKE FORGED ALLOY GRAPHITE PAINTED WHEELS WITH DIAMOND-TURNED FINISH
Option V8, V8 S, N430



19" 10-SPOKE FORGED ALLOY LIQUID SILVER PAINTED WHEELS
Standard V12 S



19" 10-SPOKE FORGED ALLOY GRAPHITE PAINTED WHEELS WITH DIAMOND-TURNED FINISH
Option V12 S



19" 10-SPOKE FORGED ALLOY GLOSS BLACK PAINTED WHEELS WITH DIAMOND-TURNED FINISH
Option V12 S



19" 10-SPOKE FORGED LIGHTWEIGHT ALLOY SILVER PAINTED WHEELS
Option V12 S



19" 10-SPOKE FORGED LIGHTWEIGHT ALLOY SATIN BLACK PAINTED WHEELS
Option V12 S



CARBON FIBRE SIDE STRAKES
Option V8, V8 S, N430, V12 S



CARBON FIBRE MIRROR CAPS
Option N430



CARBON FIBRE REAR LAMP INFILL
Option N430

EXTERIOR CARBON FIBRE PACK – SIDE STRAKES, MIRROR CAPS, REAR LAMP INFILL

Option V8, V8 S, V12 S



SIDE STRAKE AND BONNET MESH
Option V8, V8 S
(Silver ■ Black ■)
V12 S (Black ■)



GRILLE FINISH
Option V8, V8 S
(Bright ■ Black ■)



CLEAR REAR LAMPS
Option V8



COLOURED BRAKE CALIPERS
Option V8, V8 S, N430
Black ■ Red ■ Silver ■
Yellow ■ Grey ■
Option V12 S
Black ■ Red ■ Yellow ■ Grey ■



SPORTS EXHAUST TRIM SURROUND
Option V8



BLACK SIDE WINDOW TRIM SURROUND
Option V8, V8 S, V12 S



CARBON FIBRE FRONT SPLITTER AND REAR DIFFUSER PACK
Option V8, N430

EXTERIOR OPTIONS

Every Vantage owner has unique tastes and a strong vision of their perfect Aston Martin. Our extensive range of options ensures each car is unique too. A perfectly executed expression of your individual vision.



RACE BESPOKE LIVERY
Exterior Colour: Alloro Green
Clubsport Graphics Pack: Yellow



STEALTH BESPOKE LIVERY
Exterior Colour: Jet Black
Clubsport Graphics Pack: Grey



TROPHY BESPOKE LIVERY
Exterior Colour: Skyfall Silver
Clubsport Graphics Pack: White



HERITAGE BESPOKE LIVERY
Exterior Colour: Mariana Blue
Clubsport Graphics Pack: Red



SPEEDWAY BESPOKE LIVERY
Exterior Colour: Speedway White
Clubsport Graphics Pack: Red

EXTERIOR OPTIONS FOR VANTAGE N430

A selection of bespoke painted graphics are available for the N430 comprising lipstick, mirror caps, A-pillar/cantrail (Coupe only) and rear diffuser blade offered in the above colours for each livery.



SILVER HEADLAMP BEZELS



V12 FRONT WING BADGING



BLACK OR SILVER GRAPHICS PACK
Individual body panels of: roof, rear tailgate panel and lamp infills, front bonnet and grille 'lipstick'

EXTERIOR OPTIONS FOR V12 VANTAGE S

Create an even greater sense of purpose for the V12 Vantage S with exterior options ranging from an iconic 'V12' script for the front wing to painted black or silver graphics packs for a distinctly aggressive aesthetic.



ACCESSORIES

1 MATS

Premium quality wool carpet overmats with a hard-wearing and easy to clean soft pile surface. Edged in quality hide with a heavy duty non-slip backing, Aston Martin is embroidered on a discreet label set in the hide edging.

2 SIGNATURE SILL PLAQUES

Add the ultimate finishing touch, with a reproduction of your signature engraved on to the door sill plaque, along with a message of your choice.

3 CARBON GEAR SURROUND

Replace your aluminium gearshift surround with lightweight carbon fibre for added sporting appeal. Meticulously produced using hand laid precision laminating techniques to help ensure the consistency of the weave and an exceptional finish.

BATTERY CONDITIONER

The conditioner has been designed to monitor the car's battery voltage to maintain 100% efficiency and performance without fear of overcharge. The unit features a 'select and forget' function providing automated recovery from mains power loss.*

4 GOLD WINGS BADGES

Exclusive 24-carat gold plated wings badges are ideal as a gift or to add your own distinctive touch to your Aston Martin. Supplied in a bespoke black leather and Alcantara®-lined presentation box.

5 ECU POUCH - Q

Protect your glass ECU with a high quality leather key pouch lined with grey Alcantara®. Handmade in England, the key pouches are available in six popular leather colours*. Optional matching leather and Alcantara®-lined presentation boxes offer a perfect storage solution for your ECU at home.

6 V12 VANTAGE S GRILLE KIT

Create a more aggressive and assertive look with the carbon fibre front grille, which also increases airflow to the engine and aids stability.

7 CARBON WHEEL CENTRE CAPS

Exquisitely crafted, precision hand laid carbon fibre wheel centre caps supplied with a high quality Obsidian Black leather and Alcantara®-lined presentation case. Available in a deep gloss or smooth satin finish, featuring the Aston Martin wings logo in silver.

WINTER WHEEL & TYRE KIT

Rain or shine. Snow or ice. Aston Martins are designed to deliver sure-footed handling whatever the weather. Our winter tyres are scientifically proven to improve traction and handling when the temperature plummets below 7°C. With a complete second set of winter wheels, you can really make the most of the changing seasons.*

CAR COVER

Fully tailored car cover made in a soft cotton mix with a protective fleece lining. Yarn dyed to prevent fading, and fully washable. The breathable material allows moisture to evaporate. Supplied with a storage bag and available in a range of fabric and trim options.*

8 LUGGAGE

Handmade in England by highly skilled craftsmen, each piece of luggage has been carefully chosen to accommodate the needs of the discerning traveller. Each set has been tailored to make best use of available boot space. Available in Black, Tan and Cream with both two and four piece configurations.

TOURING PACK

Packaged in a high quality Obsidian Black leather and Alcantara®-lined case, the touring pack fits neatly into the boot of any Aston Martin and features an invaluable in-car kit.*

*Please note these accessories are not pictured.



Q BY ASTON MARTIN

**FOR THE INDIVIDUAL.
THE ULTIMATE BESPOKE OPTION.**
Aston Martin's unique personalisation service can transform your Vantage in ways that are only bound by your imagination. Q by Aston Martin can take you on a journey through art, design and craft, accommodating inspiration from any source.

Working closely with Aston Martin's award-winning design team, your Vantage can be a true reflection of the things you hold closest to your heart.



ASTON MARTIN LIFE & WORKING WITH YOUR DEALER



When you buy a Vantage you enter an exclusive family of like-minded enthusiasts and a whole world of new experiences and opportunities open up. The first steps on this journey are taken in partnership with our passionate and vastly knowledgeable dealership network. Each of our dealerships draws upon many years of experience, an infectious enthusiasm and a determination to provide the most exacting standards of customer care.

One of the most valuable services our dealerships provide is helping you to create an Aston Martin that is a true reflection of your tastes and personality. This considered and enjoyable process is the key to beginning an individual and deeply satisfying ownership experience. An experience that starts with the car but has the potential to take you to places and events that only the very few can enjoy.

Upon delivery of your Vantage our experts will keep you informed about exclusive Aston Martin customer driving events and our extensive calendar of VIP experiences. These exciting and immersive events range from our On Track and On Ice experiences, where you can test yourself and our cars to the absolute limit in complete safety, to lifestyle events that offer exquisite dining opportunities,

hospitality and access to the most exclusive functions around the world. Life, with an Aston Martin, will never be quite the same again.

VANTAGE N430 SPECIFICATION

Body	Suspension	<ul style="list-style-type: none"> Door and seat inserts in Plissé Alcantara® (Coupe only) or indented leather (all models) Carbon fibre fascia Piano Black trim pack Black anodised centre console rotary controls Pure Black Alcantara® steering wheel with matching stitch (Coupe only) or leather steering wheel with contrasting on-centre stitch (all models) Electrically adjustable carbon fibre lightweight seats² or Sports seats with side airbags Dual-stage driver/passenger front airbags Powerfold exterior heated mirrors Heated rear screen Automatic temperature control Organic Electroluminescent (OEL) displays Trip computer Rear parking sensors Tyre pressure monitoring¹ Alarm and immobiliser Remote control central door locking and boot release Glass ECU Aston Martin Tracking by Cobra (UK only)^{3,4} LED map reading lights Black anodised tread plates with machined carbon special edition sill plaque Embroidered 'N430' seat logo Cruise control Satellite navigation system
<ul style="list-style-type: none"> Two-seat, two-door Coupe or soft-cover convertible top body style Extruded bonded aluminium VH body structure Aluminium, magnesium alloy, composite and steel body Extruded aluminium door side-impact beams Halogen projector headlamps (main beam) High Intensity Discharge headlamps (dipped beam) LED rear lamps 	Brakes	<ul style="list-style-type: none"> Competition suspension (Coupe only) Carbon fibre front splitter and rear diffuser Carbon fibre side strakes Carbon fibre mirror caps Carbon fibre rear lamp infills Rear parking assist camera Front parking sensors 19" 5-spoke alloy Gloss Black painted wheels with diamond-turned finish 19" 10-spoke forged alloy Graphite painted wheels with diamond-turned finish Choice of brake caliper finish: Black, Red, Silver, Grey, Yellow 'N430' tailgate badge
Engine		Dealer fit options & accessories
<ul style="list-style-type: none"> All-alloy, quad overhead camshaft, 32-valve, 4735 cc V8 Front mid-mounted engine, rear-wheel drive Fully catalysed, stainless steel Sports exhaust system with active bypass valves Compression ratio 11.3:1 Max power 321 kW (436 PS/430 bhp) at 7300 rpm Max torque 490 Nm (361 lb ft) at 5000 rpm Acceleration 0-60 mph in 4.6 seconds 0-100 km/h in 4.8 seconds Maximum speed 305 km/h (190 mph) 		<ul style="list-style-type: none"> Carbon fibre wheel centre caps Carbon fibre tailpipe finishers Carbon fibre parcel shelf Alcantara® gear knob N430 themed Aston Martin luggage (small, medium and large holdalls) available in Obsidian Black or Argento Grey with a choice of accent colour: Yellow, Black, Silver or Red Indoor car covers with contrasting piping and N430 logo to complement exterior liveries: <ul style="list-style-type: none"> Green & Yellow Black & Grey Silver & White Dark Blue & Red White & Red Outdoor car cover N430 themed leather ECU pouches available in Obsidian Black or Argento Grey with a choice of accent colour: Yellow, Black, Silver or Red Leather storage saddle Valve caps with Aston Martin logo Carpet mats (2-piece cabin set and boot mat) Battery conditioner Winter tyres
Transmission	Standard exterior specification	Dimensions
<ul style="list-style-type: none"> Rear mid-mounted, six-speed manual transmission with carbon fibre gearshift surround Alloy torque tube with carbon fibre propeller shaft Limited-slip differential Final-drive ratio 3.909:1 	<ul style="list-style-type: none"> A selection of 5 exterior colour liveries: <ul style="list-style-type: none"> 'Race' (Alloro Green) 'Stealth' (Jet Black) 'Trophy' (Skyfall Silver) 'Heritage' (Mariana Blue) 'Speedway' (Speedway White) 'S' side sills Dark anodised calipers Black vaned front grille Black bonnet and side strake meshes Black headlamp bezels¹ Gloss Black window trim surround Black textured tailpipe finisher Clear rear lamps with black surround Special edition engine bay inspection plaque 	<ul style="list-style-type: none"> Length 4385 mm (172.6") Width 1865 mm (73.4") excluding mirrors; 2022 mm (79.6") including mirrors Height Coupe 1260 mm (49.6") Height Roadster 1270 mm (50.0") Wheelbase 2600 mm (102.4") Front track 1570 mm (61.8") Rear track 1590 mm (62.6") Turning circle 11.38 m (37.3') (kerb to kerb) Boot capacity Coupe 300 litres (10.6 cu ft) Boot capacity Roadster 144 litres (5.0 cu ft) Fuel capacity 80 litres (17.6 UK gal/21.1 US gal) Kerb weight Coupe 1610 kg (3549 lb) Kerb weight Roadster 1690 kg (3726 lb)
Steering	Standard interior specification	Fuel consumption
<ul style="list-style-type: none"> Rack and pinion, power assisted steering, 2.62 turns lock-to-lock Column tilt and reach adjustment Steering rack with 15:1 ratio 	<ul style="list-style-type: none"> Black or Grey interior theme with a choice of accent colour: Yellow, Black, Silver, Red, Orange Obsidian Black or Argento Grey leather interior 	<ul style="list-style-type: none"> Manual Urban 19.6 (14.4) Extra-urban 10.4 (27.2) Combined 13.8 (20.5) 'Sportshift II'⁶ Urban 19.0 (14.9) Extra-urban 9.2 (30.7) Combined 12.8 (22.1)
Wheels & Tyres		Gas mileage
<ul style="list-style-type: none"> 19" 5-spoke alloy Graphite painted wheels Front: 8.5J x 19" Bridgestone Potenza RE050 245/40 ZR19 Rear: 10.0J x 19" Bridgestone Potenza RE050 285/35 ZR19 		(North America only)
		<ul style="list-style-type: none"> Manual City 13 mpg Highway 19 mpg Combined 15 mpg 'Sportshift II'⁶ City 14 mpg Highway 21 mpg Combined 16 mpg
		CO2 emissions
		<ul style="list-style-type: none"> Manual 321 g/km 'Sportshift II'⁶ 296 g/km
		CO2 emissions
		<ul style="list-style-type: none"> 1 Not available in all markets. 2 Does not include side airbags or passenger airbag cut-off switch. 3 Complies with UK Thatcham Category 5 requirements. 4 Excludes subscription. Standard in UK. 5 Cobra is a registered trademark of Cobra Automotive Technologies SpA. 6 iPod® is a trademark of Apple Inc., registered in the US and other countries. 7 'Sportshift' trademark is used under licence from Prodrive (Holdings) Ltd. 8 Not available with lightweight seats. 9 Standard with lightweight seats.

V12 VANTAGE S SPECIFICATION

Body	Suspension	<ul style="list-style-type: none"> Satellite navigation¹ Satellite radio (USA and Canada only) Rear parking sensors Tyre pressure monitoring¹ Alarm (with volumetric and tilt sensor) and immobiliser Remote control central door locking and boot release Glass ECU Glass switches Aston Martin Tracking by Cobra (UK only)^{4,6} LED map reading lights 	
<ul style="list-style-type: none"> Two-seat, two-door Coupe body style Extruded bonded aluminium VH body structure Aluminium, magnesium alloy, composite and steel body Extruded aluminium door side-impact beams Halogen projector headlamps (main beam) High Intensity Discharge headlamps (dipped beam) LED rear lamps Clear rear lamps with a black border Carbon fibre front splitter and rear diffuser Black headlamp bezels¹ 	Brakes	In-car entertainment	
Engine		<ul style="list-style-type: none"> Front: Ventilated Carbon Ceramic Matrix discs, 398 mm diameter with six-piston monobloc calipers Rear: Ventilated Carbon Ceramic Matrix discs, 360 mm diameter with four-piston monobloc calipers Dynamic Stability Control (DSC) with Track mode Anti-lock Braking System (ABS) with Track mode Electronic Brakeforce Distribution (EBD) Emergency Brake Assist (EBA) Traction Control (TC) Hydraulic Brake Assist (HBA) Positive Torque Control (PTC) Hill Start Assist (HSA) 	<ul style="list-style-type: none"> Infotainment System (AMi II) 160 watt Aston Martin audio system Phone (Bluetooth hands-free) AM / FM and DAB / SDAR USB x 2 reversible sockets iPod/iPhone interface (via Apple USB cable)⁵ Bluetooth® audio streaming
<ul style="list-style-type: none"> All-alloy, quad overhead camshaft 48-valve, 5935 cc V12 Front mid-mounted engine, rear-wheel drive Fully catalysed, stainless steel exhaust system with active bypass valves Compression ratio 11.1:1 Max power 421 kW (573 PS/565 bhp) at 6750 rpm Max torque 620 Nm (457 lb ft) at 5750 rpm Acceleration 0-60 mph in 3.7 seconds 0-100 km/h in 3.9 seconds Maximum speed 330 km/h (205 mph) 	Exterior options	Fuel consumption	
Transmission	Standard specification	<ul style="list-style-type: none"> Urban 22.5 (12.6) Extra-urban 10.2 (27.7) Combined 14.7 (19.2) 	
<ul style="list-style-type: none"> Rear mid-mounted, seven-speed 'Sportshift III' automated manual transmission⁷ Alloy torque tube with carbon fibre propeller shaft Limited-slip differential Final-drive ratio 3.727:1 	<ul style="list-style-type: none"> Dark anodised calipers Grain-enhanced leather and Alcantara® interior Carpeted rear cabin Piano Black fascia Piano Black trim pack Alcantara®-trimmed sports steering wheel with black airbag ring Electrically adjustable sports seats with side airbags Memory seats and exterior mirrors (three positions) Dual-stage driver/passenger front airbags Carbon fibre front grille Titanium front grille and side strake meshes Powerfold exterior heated mirrors Heated rear screen Automatic temperature control Organic Electroluminescent (OEL) displays Infotainment System (AMi II) Trip computer Cruise control Bluetooth® telephone preparation 	Gas mileage	
Steering		(North America only)	
<ul style="list-style-type: none"> Rack and pinion, speed-sensitive Servotronic power-assisted steering, 2.5 turns lock-to-lock Column tilt and reach adjustment Steering rack with 15:1 ratio 	Dimensions	<ul style="list-style-type: none"> Manual City 12mpg Highway 18mpg Combined 14mpg 	
	<ul style="list-style-type: none"> Length 4385 mm (172.6") Width 1865 mm (73.4") excluding mirrors Width 2022 mm (79.6") including mirrors Height 1250 mm (49.2") Wheelbase 2600 mm (102.4") Front track 1570 mm (61.8") Rear track 1575 mm (62.0") Turning circle 11.8 m (38.7 ft) (kerb to kerb) Boot capacity 300 litres (10.6 cu ft) Fuel capacity 80 litres (17.6 UK gal/21.1 US gal) Kerb weight 1665 kg 	CO2 emissions	
		<ul style="list-style-type: none"> 343 g/mile 	
		CO2 emissions	
		<ul style="list-style-type: none"> 343 g/mile 	

- 1 Not available in all markets.
- 2 Not available with lightweight seats.
- 3 Does not include side airbags or passenger airbag cut-off switch.
- 4 Complies with UK Thatcham Category 5 requirements. Excludes subscription. Standard in UK.
- 5 iPod® is a trademark of Apple Inc., registered in the US and other countries.
- 6 Cobra is a registered trademark of Cobra Automotive Technologies SpA.
- 7 'Sportshift' trademark is used under licence from Prodrive (Holdings) Ltd.
- 8 Only available in conjunction with Bang & Olufsen BeoSound audio system

Pictures and word mark

The cars illustrated in this brochure may include additional options not featured in this brochure or that are only available at extra cost.

Updates

Aston Martin Lagonda Limited is constantly seeking ways to improve the specification, design and production of its cars and alterations take place continually. Whilst every effort is made to produce up-to-date literature about our evolving products, this brochure should not be regarded as a guide to any currently available products, options, accessories or specifications, nor does it constitute any offer for sale of any particular car, product, option, accessories and/or services or combination of the same.

This brochure is merely an indication of the kinds of Aston Martin products and services which may be available from time to time. The contents of this brochure represent Aston Martin Lagonda Limited's business as a whole. Text and photographs in this brochure may relate to specifications, options, accessories and/or services that are not available for sale in some countries or which have been superseded or are otherwise no longer available. Images shown may not be reflective of the final car.

Performance results

Performance results, fuel consumption figures and CO2 emissions data quoted in this brochure are obtained under controlled test conditions (in accordance with applicable regulations) and may vary depending on the specification of the particular car, road and environmental conditions and driving style. Tyre choice may also impact on performance results, fuel consumption, CO2 emissions, ride comfort and handling.

Published figures should be used for comparison purposes only and verification should not be attempted on public roads. No guarantee is given express or implied of performance results, fuel consumption or CO2 emissions. Aston Martin Lagonda Limited strongly urges that all speed laws be obeyed and that safety belts be worn at all times.

The weight of the car will influence the level of CO2 emitted and as a result, cars with higher levels of specification and factory fit options may emit higher levels of CO2. However, Vehicle Excise Duty is charged according to the weight of and CO2 emissions of the standard car, as published in this brochure. All petrol engines are fitted with a catalytic converter.

Copyright and other intellectual property rights

This brochure and its contents are protected by various intellectual property rights, including without limitation, copyright, design rights and trademarks, that are owned or licensed by Aston Martin. You may not copy or use this brochure or any of its contents for any commercial purpose without our prior written consent.

Distributors and dealers

Distributors and dealers are not agents of Aston Martin Lagonda Limited and have absolutely no authority to bind Aston Martin Lagonda Limited by any express or implied undertaking or representation. Sales by dealers or agents are subject to their terms and conditions of sale.

Company details

Aston Martin Lagonda Limited (company number 01199255) has its registered office at Banbury Road, Gaydon, Warwickshire CV35 0DB, England.

Telephone +44(0)1926 644644
Facsimile +44(0)1926 644333
VAT Number 904 447 237

www.astonmartin.com

Part no: 706449

Country of origin: England

Design and production
Identity Ltd (London)

IMPORTANT NOTICE